

**Table 1 China's Human Resources in Science and Technology
(1,000 persons; 1,000 person-years)**

	1999	2000	2001	2002	2003	2004
Human resources in S&T	n.a.	32000	33800	36600	38500	n.a.
Professionals	29043	28874	28477	28344	27746	27504
Scientific personnel	2905.6	3223.5	3140.1	3221.8	3284	3481.4
S&Es in scientific activities	1594.6	2045.9	2071.5	2172	2254.7	2252
R&D personnel	821.7	922.1	956.5	1035.1	1090.5	1152.6
S&Es in R&D activities	531.1	695.1	742.7	810.5	862.1	926.2

Source: National Bureau of Statistics and Ministry of Science and Technology (comp.), *China Statistical Yearbook on Science and Technology* (Beijing: China Statistics Press, various years).

Table 2 Total Enrollments of Higher Education in China (1,000 Persons)

Year	Undergraduate *	Graduate
1991	2,044	88
1992	2,184	94
1993	2,536	107
1994	2,799	128
1995	2,906	145
1996	3,021	163
1997	3,174	176
1998	3,409	199
1999	4,086	234
2000	5,561	301
2001	7,191	393
2002	9,034	501
2003	11,086	651
2004	13,335	820

* Enrollment in regular institutions of higher education only.

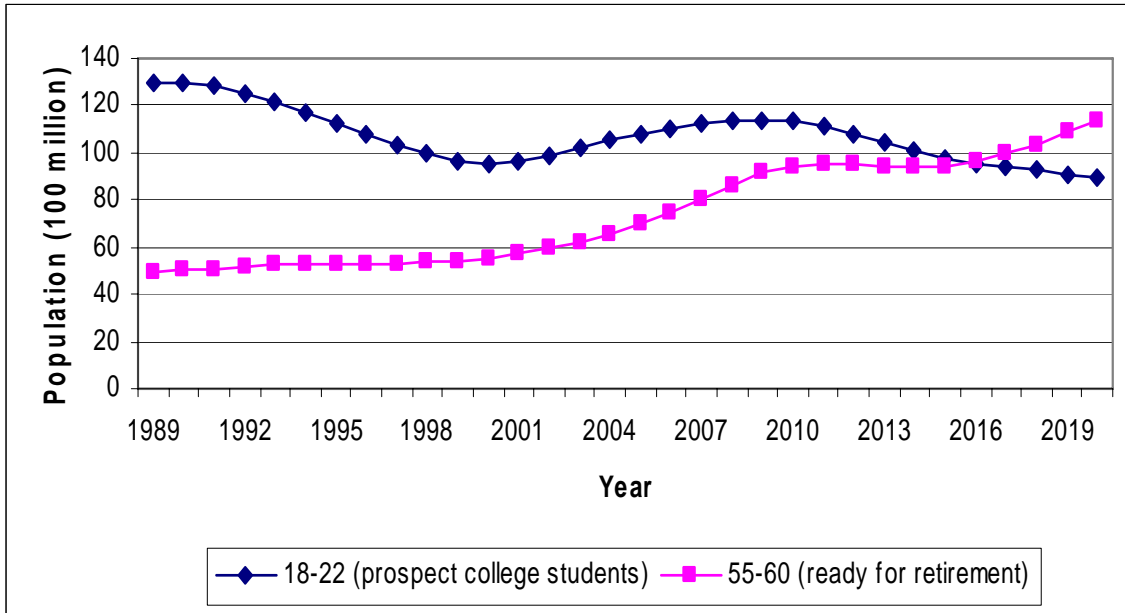
Source: Department of Development & Planning, Ministry of Education (comp.), *Educational Statistical Yearbook of China* (Beijing: People's Education Press, various years).

**Table 3 Forecast of the Demand and Supply of Scientists and Engineers in China
(1,000 Persons)**

Year	Supply	Demand			Shortage or Oversupply vs. Most likely
		Most likely	Lower	Higher	
2005	2377	2642	2428	2793	-265
2006	2533	2853	2493	3240	-320
2007	2721	3077	2565	3712	-356
2008	2940	3316	2645	4211	-376
2009	3193	3573	2732	4740	-380
2010	3480	3850	2828	5301	-369
2011	3803				
2012	4162				
2013	4561				
2014	5000				
2015	5480	5955	4259	6856	-476
2016	6002				
2017	6569				
2018	7180				
2019	7837				
2020	8541	8863	5104	11160	-322

Source: China Talent Pool projection.

Figure 1 China's Population Change by Age Groups



Source: Based on China's population growth projection by the United Nations Population Division (2005).

Figure 2 Analytical Models and Variables

